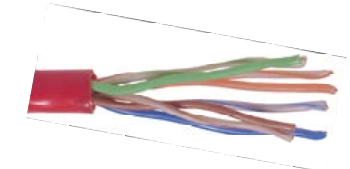


T568A Wiring

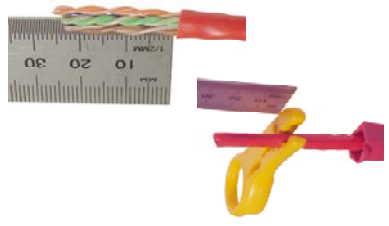
Step 4. Fan the wires into two horizontal rows and arrange into the correct colour sequence.



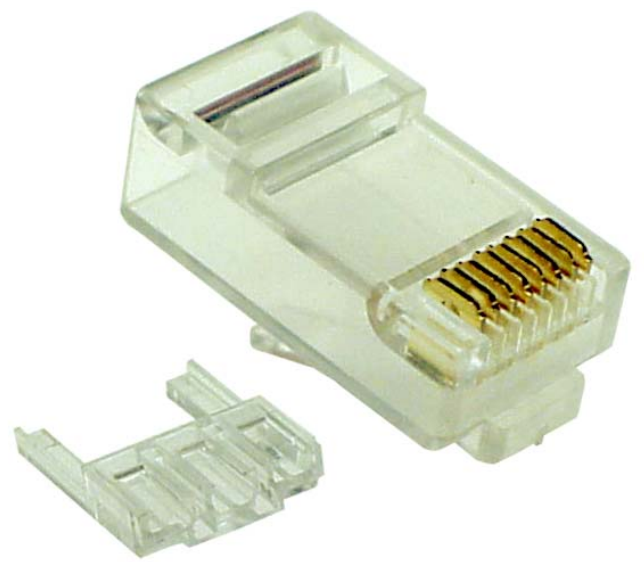
Step 3. Untwist the pairs and straighten each individual wire.



Step 2. Using a Cable Stripper (Cat # T0033), strip approximately 20mm from the outer cable jacket.



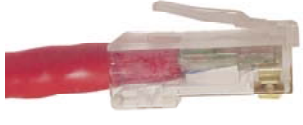
Step 1. Slide the PVC boot onto the cable.



Step 9. Check that all wires are still at the end of the load-bar.



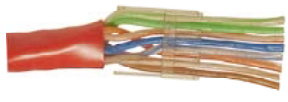
Step 8. Keeping the load-bar in the same orientation, push the cable and load-bar into the plug body. Make sure that the load-bar is pushed up to the end of the plug body.



Step 7. Trim excess wires protruding through the load-bar.



Step 6. Insert the cable into the load-bar and push the load-bar towards the end of the cable sheath so that the end of the "legs" are flush with the end of the sheath.



Step 5. Orient the polycarbonate load-bar as shown.



Step 10. Using an 8P8C Modular Crimp Tool (Cat # T0019), crimp the cable to the plug.



Step 11. Check that the contacts have been successfully crimped to the conductors.



Step 12. Slide the boot over the plug to complete the assembly



Step 13. Using a Cat5 Test Set (Cat # T0045) check cable continuity and wiring sequence are both OK.



P2176 Category 6 Modular Plug Terminating Instructions