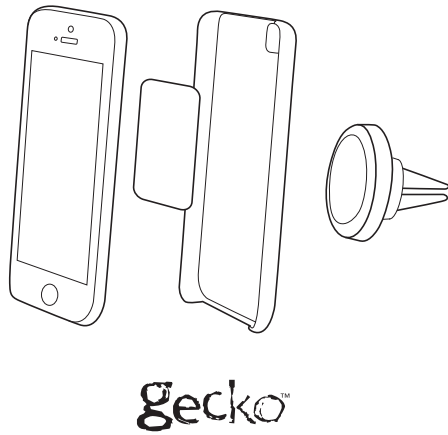


Gecko Magnetic Vent Holder Installation Guide and Warranty



WARRANTY INFORMATION - FOR AUSTRALIAN CONSUMERS ONLY

Powermove Distribution provides its accessory range of products with a 1 Year back to base warranty: "Our goods come with guarantees that cannot be excluded under the Australian Consumer Law. You are entitled to a replacement or refund for a major failure and for compensation for any other reasonably foreseeable loss or damage. You are also entitled to have the goods repaired or replaced if the goods fail to be of acceptable quality and the failure does not amount to a major failure".

The warranty offered is in addition to other rights and remedies offered under consumer law.

The conditions contained in this warranty apply to purchases made within Australia only.

Purchases made outside of Australia are covered by the warranty procedures and policies that comply with each respective place of purchase.

Conditions of warranty:

- The consumer must retain proof of purchase for the warranty period.
- The warranty period is valid for 1-year from the original purchase date.
- The warranty applies only to defects in material or workmanship that occur during normal use of the product.
- The warranty is a 'back-to-base' warranty meaning the consumer is responsible for the costs associated with returning the product to their place of purchase or to Powermove Distribution.
- The consumer must return the goods, original packaging (where feasible) and proof of purchase to make a warranty claim.
- If a replacement product is supplied the warranty period applies to the balance of the warranty period from the original purchase date.

The warranty does not cover:

- Failure that has occurred as a result of accident, abuse or mis-treatment.
- Goods that are damaged as a result of other third party products.
- Any misrepresentations given that are not covered by the warranty.

Warranty claim procedure:

- The consumer must return the goods as per the requirements stated in 'conditions of warranty' section d & e.
- If the consumer is unable to return the goods to the place of purchase they can send the goods with the required packaging and documentation, along with their contact details including address, phone number and e-mail to:

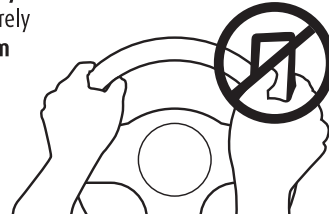
Warranty Department
Powermove Distribution
28 The Gateway
Broadmeadows, Vic 3047

Ph: 03 9358 5999 Fax: 03 9357 1499
E-Mail: support@powermove.com.au

Thank you for purchasing another quality Gecko product.
Introducing Gecko Magnetic Vent Holder.

At Gecko we believe in delivering products that enhance the exceptional functionality of your smartphone. Designed in Australia, used everywhere, the Gecko Magnetic Vent Holder is the simple and easy way to mount your smartphone inside your car or to any standard vent. Just place the metal plate inside the back of your case or directly to your smartphone, then it will snap-on securely to your magnetic vent holder. All Gecko products reflect the attention to detail and hard work of our world class design and development team. We are committed to the pursuit of excellence in making sure we deliver the highest quality products to enhance your digital lifestyle.

Please enjoy
Yours sincerely
Gecko Team



Drive safely with hands free smartphone use



Included in this pack:

- 1 x Gecko magnetic vent holder
- 2 x Rectangle metal attachment plates
- 1 x Installation guide and warranty information

To remove the adhesive metal attachment plate:

Use a thin plastic card to carefully lift the plate from your smartphone. Slowly lift and remove the plate, clean off any adhesive residue with a non-abrasive cleaner.

IMPORTANT WARNINGS

Do not use with any hard drive based devices e.g. iPod classic and Zune MP3 players.

This mount is not compatible with heavy duty phone cases, ensure that your case is thin enough to be held securely before operating your vehicle.

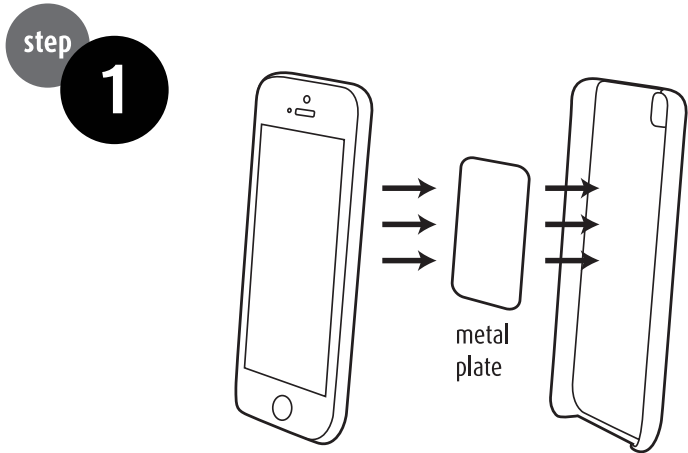
Use caution when handling any plastic parts of your vehicle, excessive pressure can cause parts to crack or break.

This mount is not to be used with any Qi Wireless Charging products. The metal plates can cause extreme heat, resulting in burns and/or damage to the device.

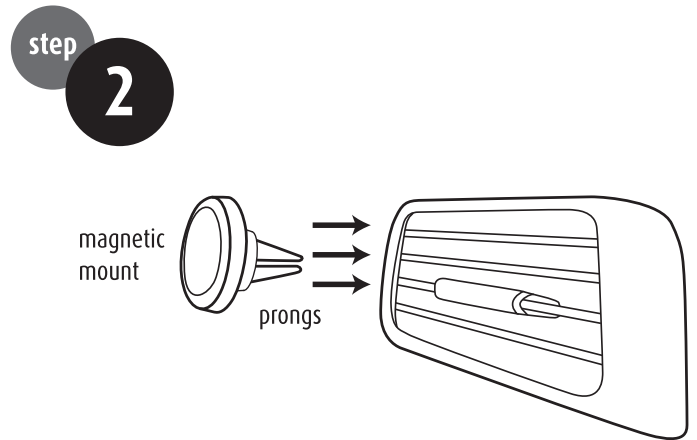
Always ensure the metal plate is adhered securely to your case or device. This will stop it from moving inside the case and rubbing on the device.

This mount is not a toy. The small magnets are harmful if swallowed, keep away from children.

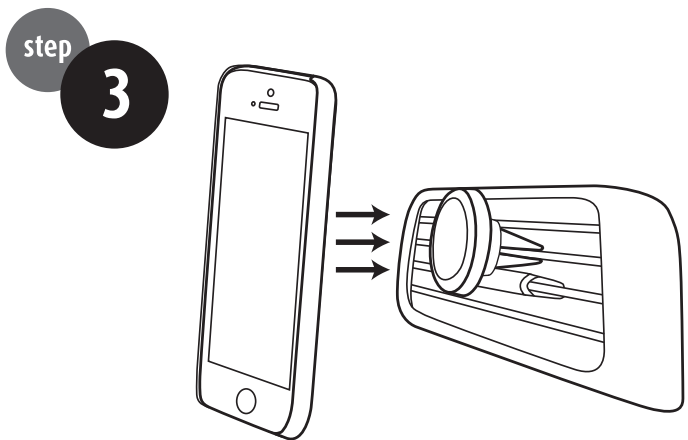




Attach the included metal plate by positioning it between your device and case. To install, firstly remove the white backing layer to expose the adhesive, then carefully place the plate to your desired position and rub it on to ensure the adhesive sticks well to your case. **If you do not wish to use a case, carefully attach the adhesive metal plate directly to the back of your device.**



Position and attach the Gecko Magnetic Vent Holder firmly to your car's air conditioning vent by sliding the prongs of the vent holder around a bar of the vent at your preferred height. Ensure that the vent holder is securely held in place before attaching your device and operating your vehicle. **Use caution when handling any plastic parts of your vehicle, excessive pressure can cause parts to crack or break.**



Hover your device with the metal plate attached directly over the surface of the securely positioned Gecko Magnetic Vent Holder. Your device will be magnetically attracted and held securely in place. **Caution: this mount is not compatible with heavy duty cases, ensure that your case is thin enough to be held securely before operating your vehicle.**