

Ultra Tough 10W Qi Wireless Charging Tray User Manual and Warranty



WARRANTY INFORMATION - FOR AUSTRALIAN CONSUMERS ONLY

Powermove Distribution provides its accessory range of products with a 1 Year back to base warranty: "Our goods come with guarantees that cannot be excluded under the Australian Consumer Law. You are entitled to a replacement or refund for a major failure and for compensation for any other reasonably foreseeable loss or damage. You are also entitled to have the goods repaired or replaced if the goods fail to be of acceptable quality and the failure does not amount to a major failure".

The warranty offered is in addition to other rights and remedies offered under consumer law.

The conditions contained in this warranty apply to purchases made within Australia only.

Purchases made outside of Australia are covered by the warranty procedures and policies that comply with each respective place of purchase.

Conditions of warranty:

- The consumer must retain proof of purchase for the warranty period.
- The warranty period is valid for 1-year from the original purchase date.
- The warranty applies only to defects in material or workmanship that occur during normal use of the product.
- The warranty is a 'back-to-base' warranty meaning the consumer is responsible for the costs associated with returning the product to their place of purchase or to Powermove Distribution.
- The consumer must return the goods, original packaging (where feasible) and proof of purchase to make a warranty claim.
- If a replacement product is supplied the warranty period applies to the balance of the warranty period from the original purchase date.

The warranty does not cover:

- Failure that has occurred as a result of accident, abuse or mis-treatment.
- Goods that are damaged as a result of other third party products.
- Any misrepresentations given that are not covered by the warranty.

Warranty claim procedure:

- The consumer must return the goods as per the requirements stated in 'conditions of warranty' section d & e.
- If the consumer is unable to return the goods to the place of purchase they can send the goods with the required packaging and documentation, along with their contact details including address, phone number and e-mail to:

Warranty Department
Powermove Distribution
28 The Gateway
Broadmeadows, Vic 3047

Ph: 03 9358 5999 Fax: 03 9357 1499
E-Mail: support@powermove.com.au

Thank you for purchasing another quality Gecko product.

The new Ultra Tough 10W Qi wireless charging tray from Gecko is a high powered wireless charging tray for fast charging your Qi standard compatible devices.

Frequently Asked Questions

How do I use the wireless charger to charge my device?

Simply connect your wireless charger to a USB power adaptor or car charger and place your device in the tray.

How do I use the wireless charger to fast charge my device?

Ensure that your device is capable of fast charging wirelessly and that you are connecting your wireless charger to a USB power adaptor that is capable of outputting 10 watts of power.

I've placed my device in the wireless charging tray but it's not charging

Ensure that your wireless charging tray is connected to a USB power source, then move your device around to ensure that it is correctly positioned over the charging coils.

Please enjoy.

Yours sincerely

Gecko Team



Included in this pack:

10W Qi Wireless charging tray
USB to micro-USB cable

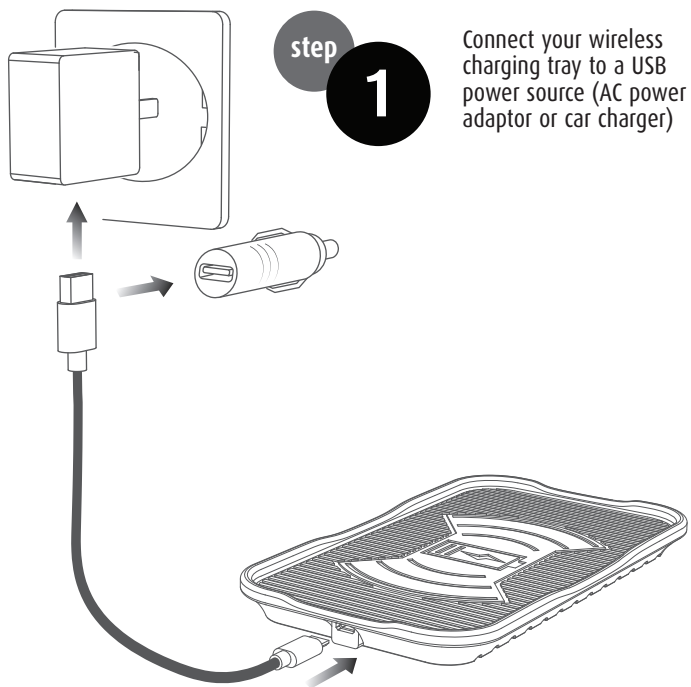
Note: USB adaptor not included

Technical Specifications:

Input: DC 5V/2A - 9V/1.67A
Output: 10W



All registered trademarks, trademarks, brand names or product names are the property of their respective owners. ©2019 Gecko Gear Australia Pty Ltd. 71 Anzac Highway, Ashford, SA, 5035. All Rights Reserved.



WARNING!

- Please use caution and care when handling any device with electrical power.
- Please refer to your country's governing electrical body for the latest information on handling products with electrical power.

Basic precautions for using the Gecko Smart Dual USB Wall Charger

- Always leave space around the wireless charger.
- Never force a connector into a port. If the connector and port do not join with reasonable ease, they may not match each other.
- Make sure that the connector matches the port and that you have positioned the connector correctly in relation to the port before plugging them together.
- To reduce the chance of shock or injury, do not use your wireless charger in or near water or wet locations.
- When connecting or disconnecting your wireless charger, always hold the unit by its sides. Keep fingers away from the metal parts of the cable connectors.
- Before connecting anything to the charger, make sure there are no foreign objects inside the wireless charger connector or USB port.
- The wireless charger is a high-voltage component and should not be dismantled for any reason. If the wireless charger needs service, please refer to your place of purchase.
- If you notice the wireless charger appears to be in any way damaged, cracked or broken please do not use the wireless charger and refer to your place of purchase.

