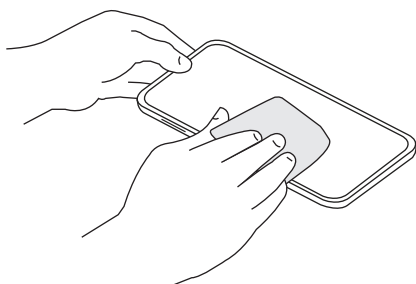




tempered glass screen protector fitting instructions

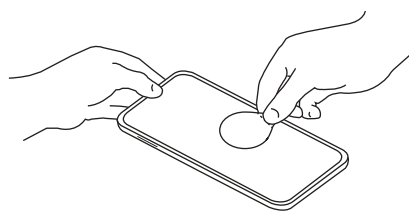
step
1

Clean and dry your screen surface thoroughly with the included alcohol wipe and microfibre cloth.



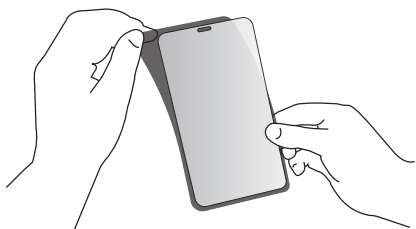
step
2

Use the dust removal sticker to ensure your screen is completely clear of hair and dust.



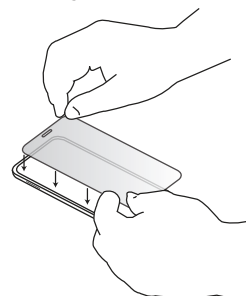
step
3

Remove the protective backing from the adhesive rear surface of the tempered glass by gently pushing it back with your thumb.



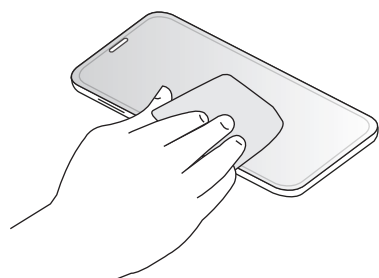
step
4

Carefully position the guard, ensuring it is aligned correctly before lowering onto the screen, working from bottom to top.



step
5

Use the microfibre cloth to ensure the guard is fully adhered to the screen surface and push out any air bubbles.



WARNING: Bending your tempered glass screen protector may cause it to shatter.

